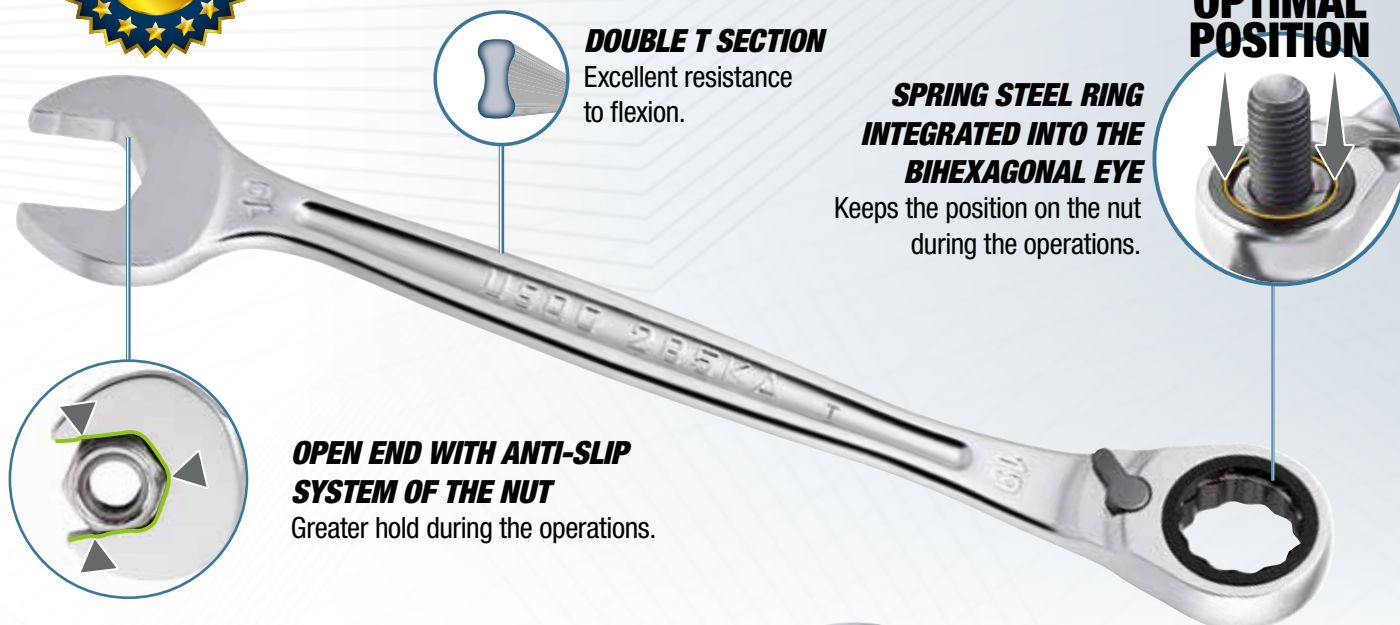


REVERSIBLE RATCHET COMBINATION WRENCHES 285 KA WITH LOCKING RING.



DOUBLE T SECTION
Excellent resistance to flexion.

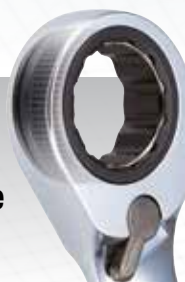
SPRING STEEL RING INTEGRATED INTO THE BIHEXAGONAL EYE
Keeps the position on the nut during the operations.



OPEN END WITH ANTI-SLIP SYSTEM OF THE NUT
Greater hold during the operations.

STRONG RATCHET

The ratcheting ring of USAG wrenches 285 KA exceeds static torsion tests, reaching a torque of +50% compared to the value required by ISO rules 1711-1



YouTube

8
PIECES

8÷19 mm



285 KA/DS8

Code U02856058

Set of 8 reversible ratchet combination wrenches with locking ring

- 285 KA 8-10-11-12-13-14-17-19 mm

12
PIECES

7÷19 mm



285 KA/DS12

Code U02856062

Set of 12 reversible ratchet combination wrenches with locking ring

- 285 KA 7-8-10-11-12-13-14-15-16-17-18-19 mm